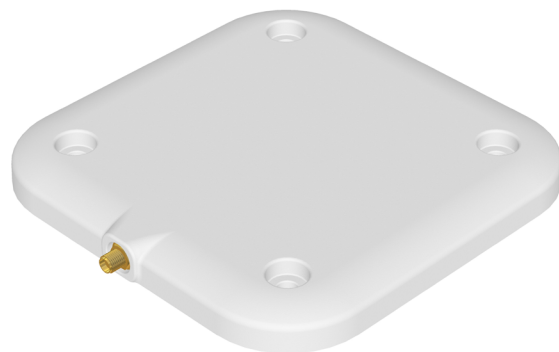


# Zebra AN520

## Ultra-Rugged, Low-Profile Antenna

IP68 rated for indoor and outdoor applications

The AN520 ultra-rugged, low-profile antenna, with an IP68 rating, is suitable for use in a variety of indoor and outdoor environments that require a small-form-factor, high-performance antenna. The outer housing is designed to be sleek and discreet enough to be integrated into any business, but rugged enough for outdoor industrial environments. The versatile flush mount blends into any location.



## AN520 Specifications

PHYSICAL CHARACTERISTICS	
Polarization	RHCP (Right Hand Circular Polarized)
Dimensions	150 mm x 150 mm x 14 mm/ 5.9 in. x 5.9 in. x 0.55 in.
Connector	SMA Female
Connector Location	Side connector
Mounting Options	Flush mount
Weight	0.25 kg/0.55 lbs
Casing/Materials	UV-Resistant ABS
Frequency Ranges	EU: 865–868 MHz US: 902–928 MHz
Gain	5.5 dBiC typical

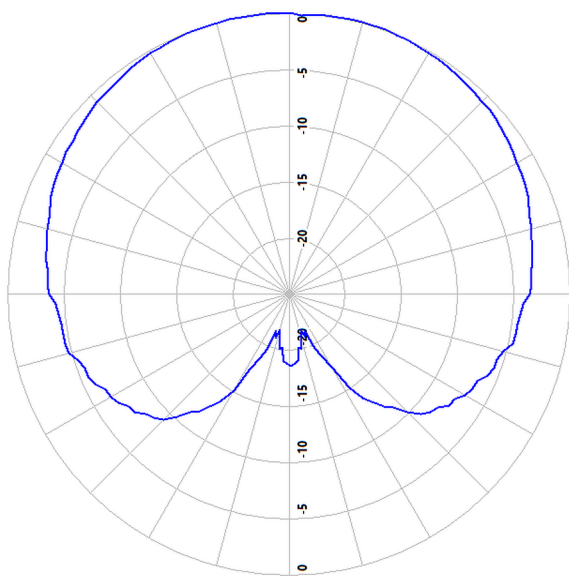
VSWR (Return Loss)	1.4 typical
Front to Back Ratio	-10 dB
3 dB Beam Width	115° in both planes
Maximum Power	3 Watts
Axial Ratio	2 dB typical
Operating Temperature	-40° to +65°C/-40° to +149°F
Storage Temperature	-40° to +65°C/-40° to +149°F
IP Sealing	IP68
Vibration	IEC60068-2-64
Humidity	72 Hours @ 85°C relative humidity

### Vertical Markets

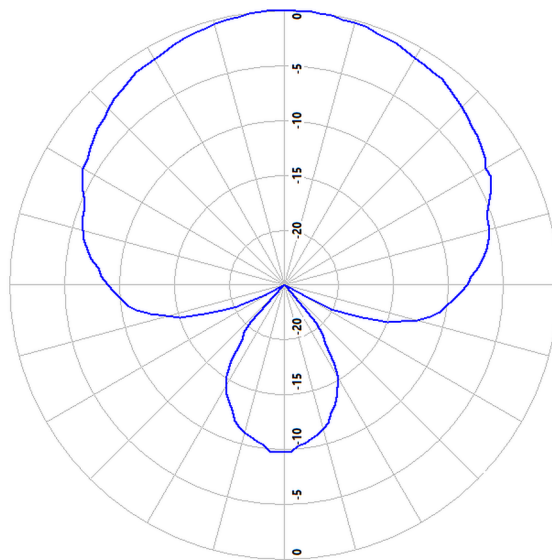
- Retail
- Warehouse Management
- Manufacturing
- Cold-chain
- Aviation
- Enterprise

### Applications

- Point of sale
- Under the counter/ within shelving
- In server racks
- Inside medical cabinets
- Luggage tracking
- Access control
- Manufacturing line
- Receiving dock doors



Horizontal (ETSI and FCC)



Vertical (ETSI and FCC)